

FOAMULAR®

Energy-Saving, Moisture-Resistant XPS Insulation



Supporting you with Smart Solutions

Application: Concrete/Masonry Walls-Internal Insulation: With VillaBoard/Plasterboard Lining

Masonry and concrete have revolutionised the way we build, but they have a big drawback of having very low insulation properties. Foamular Extruded Polystyrene is a closed cell insulation board, ideal for increasing the R-Value of internal walls.



Proprietary timber or steel batten or furring channel sections may be used with channel spaced at 600mm centres. Foamular sheets (2400 x 600) will fit neatly between channel sections. Refer to manufacturers for installation and approved fastening methods.

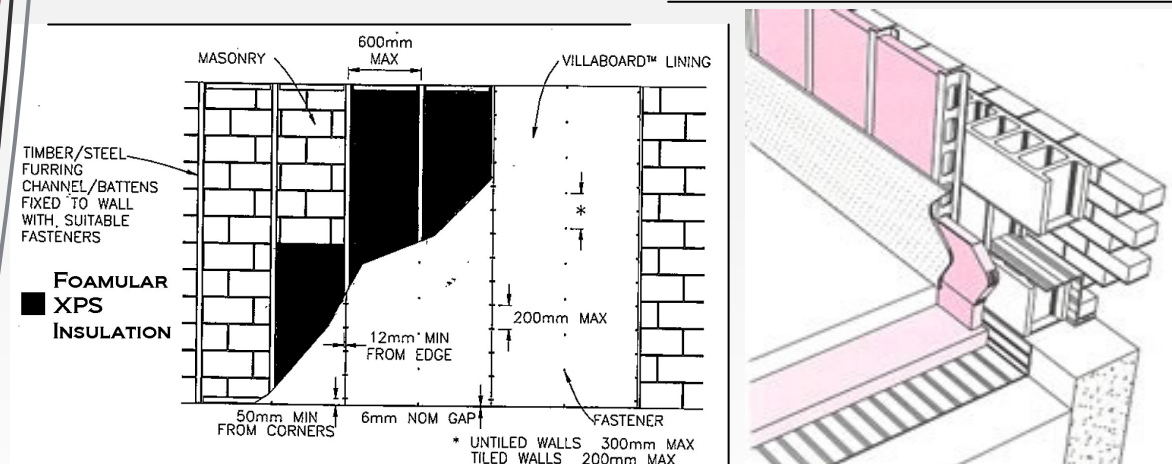
Lining Sheets should be installed as per manufacturers installation guide.

Meet Part J Requirements Using Foamular's High R-Values In Tough, Light, Easy To Install Boards

- 50mm - R1.78
- Total Wall Values R2.0+

Adhesives should be tested to ensure compatibility with the Foamular insulation. Most acrylic plasterboard/cornice adhesive will suit. Alternatives such as liquid nails 'fast' Tremco PU08 or Megabond construction adhesives are also Foamular compatible.

R VALUES: Foamular Metric 300/50 has a material only Value of R1.78. The total 'R' of a common tilt up concrete wall including Foamular and villa board lining will be approximately R2.1.



Recommended Material: Foamular Metric 300 - 40, 50, 75 mm (to meet required R-Value)

For Technical Information, Contact Mike Nagle - 0417 268 660

mnagle@austech.com.au • www.foamular.com.au

NSW • QLD • VIC • WA • TAS • NZ