

**Application: Concrete/Masonry Walls-Internal Insulation:  
 With VillaBoard/Plasterboard Lining**

Masonry and concrete have revolutionised the way we build, but they have a big drawback of having very low insulation properties. Foamular Extruded Polystyrene is a closed cell insulation board, ideal for increasing the R-Value of internal walls.



Proprietary timber or steel batten or furring channel sections may be used with channel spaced at 600mm centres. Foamular sheets (2450 x 600) will fit neatly between channel sections. Refer to manufacturers for installation and approved fastening methods.

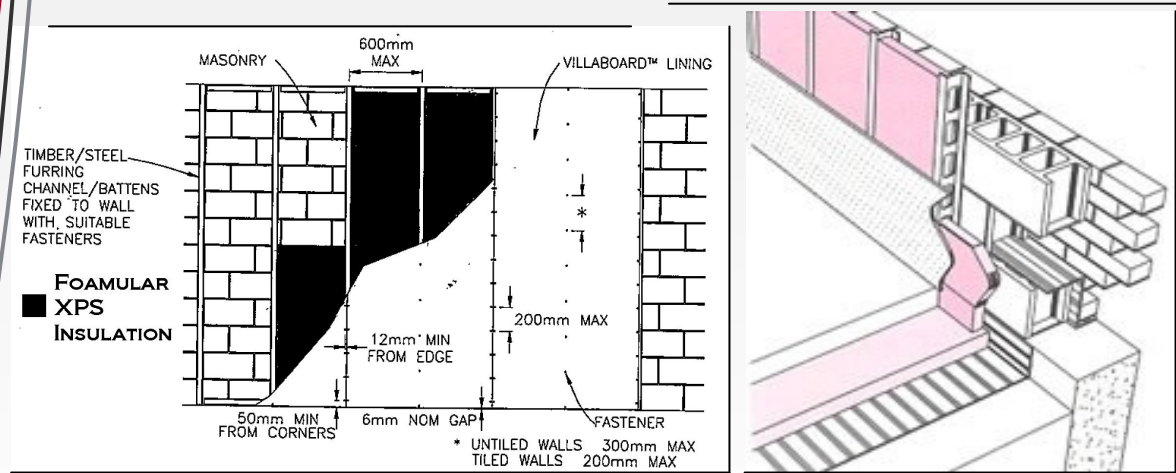
Lining Sheets should be installed as per manufacturers installation guide.

**Meet Part J Requirements  
 Using Foamular's High R-  
 Values In Tough, Light,  
 Easy To Install Boards**

- 50mm - R1.78
- Total Wall Values R2.0+

Adhesives should be tested to ensure compatibility with the Foamular insulation. Most acrylic plasterboard/cornice adhesive will suit. Alternatives such as liquid nails 'fast' Tremco PU08 or Megabond construction adhesives are also Foamular compatible.

**R VALUES:** Foamular Metric 300/50 has a material only Value of R1.78. The total 'R' of a common tilt up concrete wall including Foamular and villa board lining will be approximately R2.1.



**Recommended Material: Foamular Metric 300 - 40, 50, 75 mm (to meet required R-Value)**  
 \*Polyboard Enviro for Greenstar Projects